



Portability • Simplicity • Flexibility

MA-303AXP

Powered Extension Speaker

User Guide



MIPRO®
MICROPHONE PROFESSIONALS

MIPRO Electronics Co., Ltd

Headquarters : 814 Pei-Kang Road, Chiayi, 60096, Taiwan

Tel : +886.5.238.0809

Fax : +886.5.238.0803

www.mipro.com.tw

mipro@mipro.com.tw



2 CE4 6 3 A

All rights reserved. Do not copy or forward without prior approvals MIPRO.
Specifications and design subject to change without notice. MN 013/10

! IMPORTANT SAFETY INSTRUCTIONS !

1. Read these instructions.
2. Keep these instructions.
3. Heed all warnings.
4. Follow all instructions.
5. Do not use this apparatus near water.
6. Clean only with a dry cloth.
7. Do not block any ventilation openings. Install in accordance with the manufacturer's instructions.
8. Do not install near any heat sources such as radiators, heat registers, stoves, or other apparatus (including amplifiers) that produce heat.
9. Do not defeat the safety purpose of the polarised or ground plug: A polarised plug has two blades with one wider than the other. The wide blade is provided for your safety. When the provided plug does not fit into your outlet, consult an electrician for replacement of the obsolete outlet.
10. Protect the power cord from being walked on or pinched particularly at plug, convenience receptacles, and the point where they exit from the apparatus.
11. Only use attachments/accessories specified by the manufacturer.
12. Use only with a cart, stand, tripod, bracket, or table specified by the manufacturer, or sold with the apparatus. When a cart is used, use caution when moving the cart/apparatus combination to avoid injury from tip-over.
13. Unplug this apparatus during lightning storms or when unused for long periods of time.
14. Refer all servicing to qualified service personnel. Servicing is required when the apparatus has been damaged in any way, such as power-supply cord or plug is damaged, liquid has been spilled or objects have fallen into the apparatus, the apparatus has been exposed to rain or moisture, does not operate normally, or has been dropped.
15. To reduce the risk of fire or electric shock, do not expose this apparatus to rain or moisture.
16. Apparatus should not be exposed to dripping or splashing and no objects filled with liquids, should be placed on the apparatus.
17. Use only with the battery which specified by manufacturer.
18. The power supply cord set is to be the main disconnected device.



WARNING

1. **FOR OUTDOOR USE:**
To reduce the risk of fire or electric shock, do not expose this apparatus to rain or moisture.
2. **UNDER WET LOCATION:**
Apparatus should not be exposed to dripping or splashing and no objects filled with liquids, such as vases should be placed on the apparatus.
3. **SERVICE INSTRUCTIONS:**
CAUTION - These servicing instructions are for use by qualified service personnel only. To reduce the risk of electric shock, do not perform any servicing other than that contained in the operating instructions unless you are qualified to do so.

	This symbol indicates that dangerous voltage constituting a risk of electric shock is present within this unit.
	This symbol indicates that there are important operating and maintenance instructions in the literature accompanying this unit.

FC & IC - ID

THIS DEVICE COMPLIES WITH PART15 OF THE FCC RULES AND RSS-123 ISSUE2 OF CANADA. OPERATION IS SUBJECT TO THE FOLLOWING TWO CONDITIONS:

- (1) This device may not cause interference.
- (2) This device must accept any interference, including interference that may cause undesired operation of the device. This equipment complies with FCC RF radiation exposure limits set forth for an uncontrolled environment.

"This product can only be used at the area that the altitude is lower than 2000m for safety purpose."

"This product can be used in non-tropical locations only for safety purpose."

Disposal Dispose of any unusable devices or batteries responsibly and in accordance with any applicable regulations.



2005-08-13

Disposing of used batteries with domestic waste is to be avoided!

Batteries / NiCad cells often contain heavy metals such as cadmium(Cd), mercury(Hg) and lead(Pb) that makes them unsuitable for disposal with domestic waste. You may return spent batteries/ accumulators free of charge to recycling centres or anywhere else batteries/accumulators are sold.

By doing so, you contribute to the conservation of our environment!

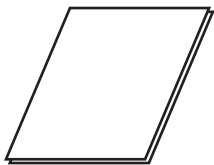
CONTENTS

- 0 Accessories
- 1 Controls and Indicators
- 3 Operating Instructions
- 3 Replacing the Rechargeable Battery

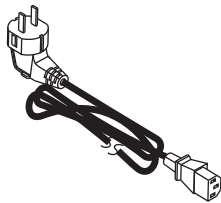
ACCESSORIES

The following accessories are included:

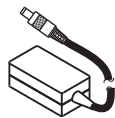
User Guide x 1



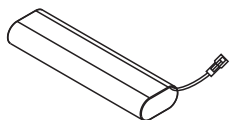
AC Power Cord x 1



Switching Power Adapter
x 1



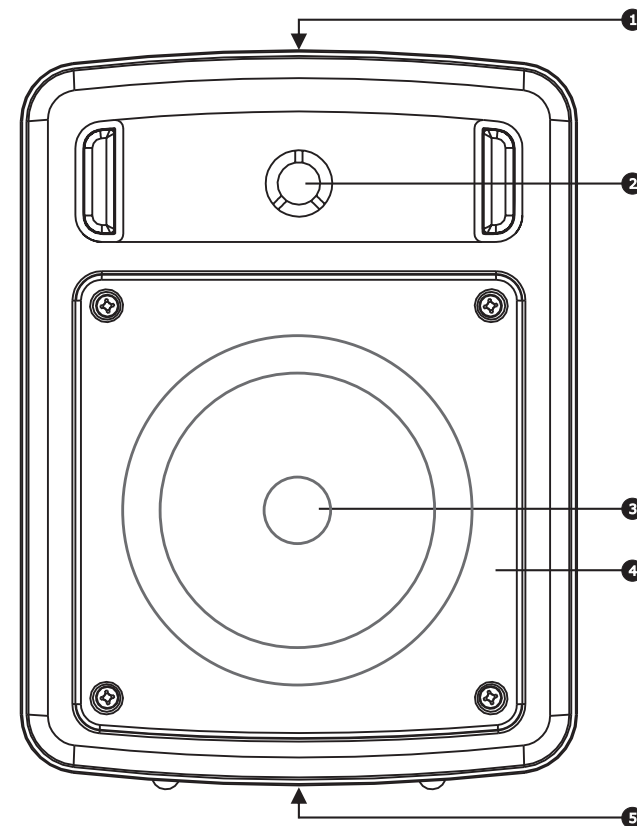
Rechargeable Lithium
Battery x 1



Optional storage &
carrying bag

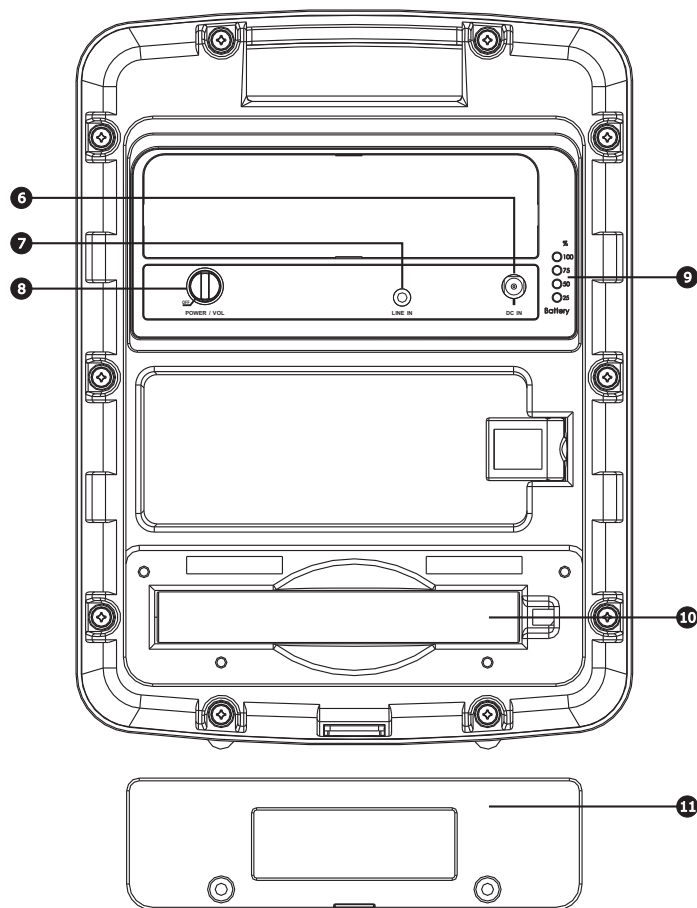


CONTROLS AND INDICATORS



- ❶ **Fixed Carry Handle**
- ❷ **Treble Speaker:** 1-inch.
- ❸ **Bass Speaker:** 5-inch full range high efficiency.
- ❹ **Speaker Grille:** To protect the loudspeakers.
- ❺ **Mic Stand Adapter:** For mounting onto a microphone stand (15.8mm/ 3/8") or a wall mounting rack MS-90.

CONTROLS AND INDICATORS



- 6 **DC IN:** Connects the supplied switching power adaptor to recharge the battery or to supply power to the system.
- 7 **LINE IN:** 3.5mm (1/8") mini-jack input. Accepts external CD/MP3/iPod/cassette/VCR/DVD player, musical instruments, computer sound card or other line-level signal source.
- 8 **POWER / MIC VOL:** Master power on/off and microphone volume.
- 9 **Battery Meter:** Displays current & charging battery level. Blinking (charging in progress); Illuminated (battery is fully charged)
- 10 **Rechargeable Battery & Compartment**
- 11 **Battery Cover:** Protects the rechargeable battery.

OPERATING INSTRUCTIONS

- Turn on master **Power/MIC VOL** switch. **Power** indicator glows red. Ready for operation.

Line Input

- Available to connect an external Audio line out signal, CD, MP3, iPod or cassette player.
- Connect a 3.5mm-to-3.5mm audio cable (not included) to the **LINE-IN** jack .
- Turn on master **POWER/MIC VOL**.
- Adjust **LINE VOL** to desired volume.

REPLACING THE RECHARGEABLE BATTERY

With a proper care and charging, it is unlikely that the rechargeable battery needs to be replaced by a new battery for some time. You may consider to have a backup battery in case you need to use MA-303 for a longer time. The rechargeable lithium battery is available from MIPRO.

INSTRUCTION OF CHARGING THE RECHARGEABLE BATTERY

- Charge the battery completely in its first use to obtain its maximum capacity.
- Connect to any available AC power outlet using the included DC adapter to the DC IN jack .
- The battery meter LED blinks while charging. Blinking LED may start later if the battery suffers from excessive battery drain. The battery may be damaged if the LED does not blink after charging for a while.
 - The battery is low when only the red LED is on. Please recharge the batter for at least 4 hours (the time of charging depends on the type of battery).
 - All LED blinking means the battery is charging.
 - Charging completes when all LED are on.
- Fully charge the battery after each use or minimum once every 3 months.
- Improper maintenance or over discharge the battery will not be covered by the warranty.
- The battery stops charging when it is fully charged. It is safe to leave it connected to the power overnight.

INSTRUCTION OF CHARGING THE RECHARGEABLE BATTERY

Note:

- The rechargeable battery pack is user replaceable. Rechargeable batteries have a limited number of charge cycles and may eventually need to be replaced. Battery life and number of charge cycles vary by use and settings.

Steps of Changing the Rechargeable Battery

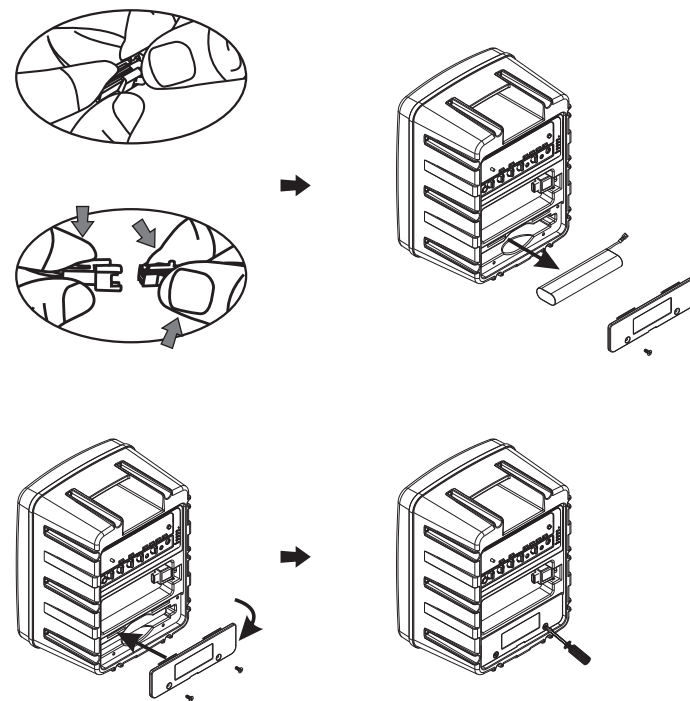
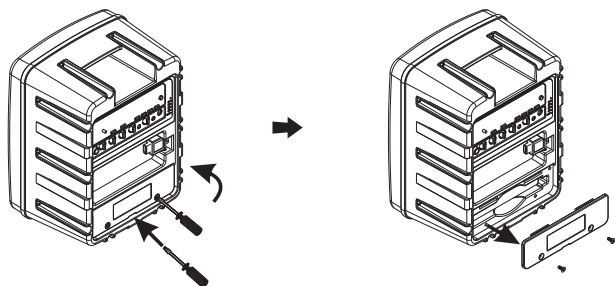
- Lay the PA system on a flat surface. Power off and gently remove USB from USB port, if needed.
- Remove the two screws so the battery cover can be opened and removed.
- The battery pack is stored inside the compartment slot. Pull out the battery gently and remove it completely by detaching the connecting pins.
- Insert the replacement battery pack. Ascertain the connecting pins are connected firmly before inserting. Carefully slide the battery back into the compartment slot.
- Insert back the two screws back in place securely.

Warning:

- Never short-circuit the battery pack by either accidentally or intentionally bringing the battery terminals in contact with another conductive object. Never expose a battery pack to abnormal shock, vibration or pressure. Failure to observe the foregoing could result in serious injury.

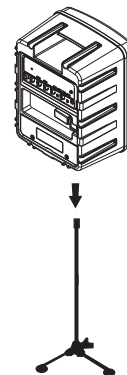
Note:

- Dispose of the used battery according to local environmental laws and guidelines.

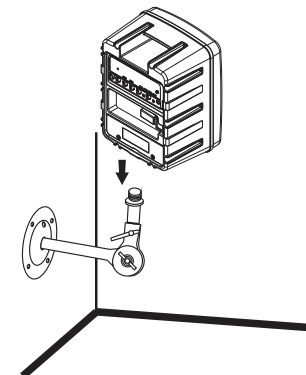


Setup Instruction

- Set the base on any 15.8mm (3/8") tripod or on top of MIPRO's MS-90 wall-mounting kit. When done, tighten the knob (see illustrations below)



(Setup on a 15.8mm/ 3/8" tripod)



(Setup on to of MS-90 wall-mounting kit)